

2017

RENEGADE[®] BACKCOUNTRY

PACKAGE HIGHLIGHTS

- RAS™ 2 front suspension
- REV-XM™ platform
- tMotion™ rear suspension
- 16 × 146 × 1.6 in. Cobra FlexEdge™ track
- HPG™ Plus aluminum front shocks
- Pilot™ DS 2 skis
- Brembo brake with braided stainless-steel brake line
- RER™ electronic reverse
- Adjustable ski stance
- RF D.E.S.S.™ key
- REV-XP™ X seat with 5 L / 1.3 us gal of storage
- 160 mm / 6.3 in. riser block
- Stiff grab handle on handlebar



600 H.O. E-TEC shown

ROTAX[®] ENGINE

| | 600 H.O. E-TEC [®] | 800 E-TEC [®] |
|-----------------------|----------------------------------|----------------------------------|
| Engine details | Liquid-cooled, 3-D R.A.V.E.™ | Liquid-cooled, 3-D R.A.V.E.™ |
| Cylinders | 2 | 2 |
| Displacement | 594.4 cc / 36.3 in. ³ | 799.5 cc / 48.8 in. ³ |
| Bore | 72 mm / 2.8 in. | 82 mm / 3.2 in. |
| Stroke | 73 mm / 2.9 in. | 75.7 mm / 3 in. |
| Maximum engine speed | 8100 RPM | 7900 RPM |
| Carburation | Electronic Direct Injection | Electronic Direct Injection |
| Recommended fuel type | Premium unleaded | Premium unleaded |
| Minimum octane | 91 | 91 |
| Fuel tank | 40 liters / 10.6 gallons | 40 liters / 10.6 gallons |
| Oil tank capacity | 3.7 liters / 3.9 quarts | 3.7 liters / 3.9 quarts |

POWERTRAIN

| | 600 H.O. E-TEC [®] | 800 E-TEC [®] |
|--------------------------------|--|--|
| Drive clutch type | TRA™ III | TRA™ III |
| Driven clutch type | QRS | QRS |
| Engagement | 3400 RPM | 3800 RPM |
| Small sprocket number of teeth | 21 | 21 |
| Large sprocket number of teeth | 49 | 45 |
| Drive sprocket number of teeth | 8 | 8 |
| Drive sprocket diameter | 183 mm / 7.2 in. | 183 mm / 7.2 in. |
| Brake system | Brembo brake with braided stainless-steel brake line | Brembo brake with braided stainless-steel brake line |

DRY WEIGHT

| | |
|-----------------|-----------------|
| 210 kg / 475 lb | 210 kg / 462 lb |
|-----------------|-----------------|

FEATURES

| | | | | | |
|--------------------|-------------------------------------|-----------------------|--------------------------------------|-----------------------|-----------------------|
| Frame | REV-XM™ | Reverse | RER™ | Mirrors | Optional |
| Skis | Pilot™ DS 2 | Heated throttle lever | Standard | Windshield | 375 mm / 15 in. |
| Seating | REV-XP™ X with storage | Heated grips | Standard | Runner | Square 5/16 |
| Handlebar | Aluminum with J-hooks / Grab handle | Gauge | Analog with display | Carbide configuration | 102 mm / 4 in. at 90° |
| Riser block height | 160 mm / 6.3 in. | Electric start | Optional (800R); Standard (600 H.O.) | Hitch | Optional |

COLOUR

White / Orange Crush 
Black 

DIMENSIONS

| | |
|------------------------|--------------------------------------|
| Vehicle overall length | 3226 mm / 127 in. |
| Vehicle overall width | 1159 or 1204 mm / 45.6 or 47.4 in. |
| Vehicle overall height | 1210 mm / 47.6 in. |
| Ski stance | 975 mm or 1019 mm / 38.4 or 40.1 in. |
| Ski overall length | 1040 mm / 41 in. |
| Track nominal width | 406 mm / 16 in. |
| Track nominal length | 3705 mm / 146 in. |
| Track profile height | 40.6 mm / 1.6 in. Cobra FlexEdge™ |

SUSPENSION

| | |
|------------------------------|------------------|
| Front suspension | RAS™ 2 |
| Front shock | HPG™ Plus |
| Front suspension max. travel | 210 mm / 8.3 in. |
| Rear suspension | tMotion™ |
| Center shock | HPG™ |
| Rear shock | HPG™ |
| Rear suspension max. travel | 239 mm / 9.4 in. |



800R E-TEC shown



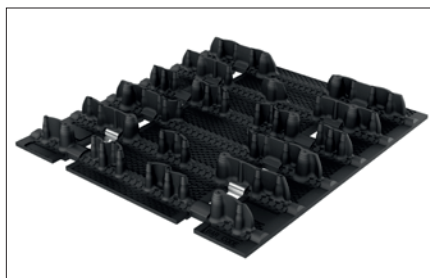
800R E-TEC shown

FEATURE HIGHLIGHTS



iMotion™ rear suspension

A swiveling rear arm and split front arm allow the skid to flex laterally for more predictable carving. More rising-rate motion ratio adds capacity and comfort.



Cobra FlexEdge™ 16 x 146 x 1.6 in. track

This track features combination of flexible cupped lugs for superior off-trail performance and more rigid lugs for added traction on hard-packed snow. FlexEdge™ technology reduces the length of the fibreglass reinforcing rods to only 12 in. (31 cm) wide, enabling the edges to flex – reducing the effort to initiate roll-up.



Running boards with large opening

Footings is solid with running board snow evacuation holes increased by 87% over the REV-XP™. The running board edge extrusion – with aggressive boot grips – is three times stronger than the REV-XP™.



LinQ™ cargo system (option)

Our cargo attachment system is the hassle-free way to connect cargo bags or a fuel caddy to your sled in seconds.



Analog gauge with display

GAUGE FEATURES

| | |
|--------------------|----------|
| Speedometer | Standard |
| Tachometer | Standard |
| Fuel | Standard |
| Engine temperature | Optional |