



# 2017 REC LITE SPARK™ TRIXX™

New for 2017! Now you can play like never before, because pulling off tricks has never been so easy and so much fun - thanks to the SPARK TRIXX exclusive features. This is easily the most hair-raising and head-turning new ride on the water.



## RIDER CAPACITY



Weight capacity 352 lb / 160 kg

## DIMENSIONS

Fuel capacity 7.9 US gal / 30 l  
 Length 110" / 279 cm  
 Width 46" / 118 cm  
 Weight (dry) 422 lb / 192 kg  
 Storage capacity 0.42 US gal / 1.6 l (Glove box) and 7.42 US gal / 28 l with opt. Front Storage Bin Kit

## ENGINE

Type Rotax® 900 HO ACE™  
 Intake system Naturally aspirated  
 Displacement 899 cc  
 Cooling Closed-Loop Cooling System (CLCS)  
 Reverse system Electronic iBR  
 Starter Electric  
 Fuel type 87 octane

Candy Blue & Chili Pepper

**iTC / iBR / CLCS**

## HULL

Type SPARK  
 • Short and light platform  
 • Shallow V hull  
 • Playful and easy to maneuver



HANDLEBAR WITH ADJUSTABLE RISER



STEP WEDGES



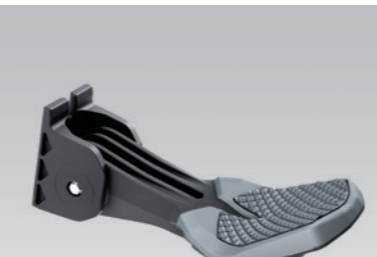
EXTENDED RANGE VTS™ (VARIABLE TRIM SYSTEM)



iBR® (INTELLIGENT BRAKE & REVERSE)



EXCLUSIVE COLORATION



REBOARDING STEP (OPTION)

## ENGINE

899 cc four-stroke, Rotax with three cylinders in-line and four valves per cylinder

The most compact and lightweight engine on the market today. The Rotax 900 HO ACE incorporates crisp acceleration, impressive fuel economy and an excellent power-to-weight ratio with a top speed of close to 50 mph (80.4 km/h).

iTC™ (Intelligent Throttle Control) system

Operating electronically, this advanced throttle system starts you in neutral for easier dockside starts. It also features activity-specific Touring and Sport modes that can all be set to accommodate your riding style. The result is a more responsive, more intuitive ride.

D-Sea-Bel™ system

Combines a series of resonators and vibration-absorbing components to make Sea-Doo watercraft some of the quietest on the water.

Closed-Loop Cooling System

Uses coolant to keep the engine running at the ideal temperature, much like a car's radiator. Also keeps out corrosive saltwater and debris.

## FEATURES

Exoskel™

Is a minimalist architecture that keeps only the essential structural parts in the front section. It reduces the weight while creating a strong, modern and cutting-edge design that defines the unique and playful nature of the Sea-Doo SPARK.

Polytec™

Is a recyclable, low density and high-impact composite material that includes polypropylene and long glass fiber reinforcements. It was designed for hull and deck applications to maintain the structural integrity of the watercraft under stress while providing light yet durable parts to support the construction of the product.

iControl

The "Brain" that integrates and controls all systems to create the best possible ride.

Touring mode / Sport mode

Offers a choice between two throttle responses for different riding styles. Touring mode is the default setting offering a more progressive acceleration curve for a more confident ride – ideal for cruising and 2-up riding. Sport mode can be easily activated by pressing the button under the cluster for 3 seconds. It provides all acceleration performance for a more aggressive throttle response.

Off-Throttle Assisted Steering (O.T.A.S.®)

Provides the operator with additional steering effect in off-throttle situations for greater maneuverability.

Interactive Multifunction Digital Information Center

Touring mode, Sport mode, Fuel level, Tachometer, Speedometer, Hour meter.

Handgrips with palm rest

Sponsons

Wetgrip footboard

Knee pad

Tow hook

Rear grab handle

Seat strap

Bilge pump kit

Single drain plug

Flush kit

Emergency floating lanyard

Operator's guide, instructional video and booklet

# SPARK TRIXX



## PROPULSION SYSTEM

iBR (Intelligent Brake & Reverse) system

First and only true brake on a watercraft recognized by the U.S. Coast Guard for improving boating safety since 2009. The intuitive iBR allows you to stop sooner for greater peace of mind. All with the squeeze of a lever. And with its electronic reverse, it gives you a level of maneuverability that makes docking easier.

Stainless steel impeller

Delivers improved acceleration, higher top speed and less cavitation.

## TRIXX PACKAGE

Handlebar with Adjustable Riser

This premium handlebar with an adjustable riser made of aluminum is up to 150 mm higher than the regular Sea-Doo SPARK handlebar offering multiple positions that give you more leverage to maneuver, lean and play with the watercraft. This system makes it easier to perform tricks and it makes anyone look like a pro on the water.

Step Wedges

Those angled contact surfaces provide stability and more confidence to shift your weight at the rear of the watercraft and allow the rider to actively use the feet to maneuver in different riding positions.

Extended Range VTS (Variable Trim System)

The VTS normally adjusts the angle of the nozzle to change the behavior of the watercraft and improve parallelism to the water. The Extended Range VTS has double the range of the regular VTS for the SPARK so you can exaggerate how high you can raise the nose or how deep you can bury it in the water making performing tricks as easy as it can be.

Exclusive coloration

## OPTIONS

- Front Storage Bin Kit
- Front Deflector Lid Kit
- Reboarding Step
- RF D.E.S.S.™ Key (Radio Frequency Identification)
- Depth Finder
- Snap-in Fenders
- Cargo Net
- Side Protector
- Grip Mat
- Sea-Doo Speed Tie™
- Dry Bag
- Sandbag Anchor
- 12-Volt Outlet and Installation Kit
- Safety Equipment Kit
- Fire Extinguisher
- Sea-Doo Move Trailer
- Sea-Doo SPARK Cover

## WARRANTY

BRP limited warranty covers the watercraft for one year.



©2016 Bombardier Recreational Products Inc. (BRP). All rights reserved.™, ® and the BRP logo are trademarks of Bombardier Recreational Products Inc. or its affiliates. Products are distributed in the USA by BRP US Inc. Never perform tricks with a passenger. Do not attempt if beyond your skills level and experience. All product comparisons, industry and market claims refer to new sit down PWC with 4-stroke engines. Watercraft performance may vary depending on, among other things, general conditions, ambient temperature, and altitude, riding ability and rider/passenger weight. Because of our ongoing commitment to product quality and innovation, BRP reserves the right at anytime to discontinue or change specifications, price, design, features, models or equipment without incurring any obligation. Printed in Canada.

**SEA-DOO**

