

# XXL blocks

## COMPOSITE FIBRE SERIES

The whole “composite fibre” range uses sheaves on composite fibre bearings and double self-captive Delrin ball thrust bearings.

The sheaves are easy to dismantle for cleaning and need no lubrication.

The sides are made of 3571 TA16 light alloy and are thickly anodized to ensure absolute wear-and corrosion proofing, with all the edges smoothed off for better handling.

The nuts and bolts have been replaced with recessed screws and pins, considerably reducing weight and eliminating any projecting parts.

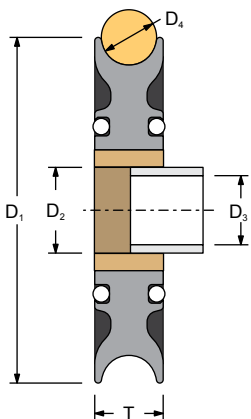
The steel coupling revolves on a fibre washer and can easily be locked in one of two main positions.



## HIGH-STRENGTH ALUMINIUM SHEAVES

Sizes 150, 180, 220 and 250 mm use thickly anodized aluminium sheaves. The main bearing is made of high-strength composite fibre impregnated with self-lubricating substances. A double lateral Delrin ball bearing makes the sheaves slide perfectly smoothly.

Sheaves are supplied with the s.steel central hub, they are available separately.



SHEAVE MODEL	D <sub>1</sub> mm	MATERIAL	T mm	D <sub>2</sub> mm	D <sub>3</sub> mm	D <sub>4</sub> mm	WEIGHT kg	SWL kg
15029/A	150	ALUMINIUM	29	40	34	20	0.90	6500
18035/A	180	ALUMINIUM	35	50	40	24	1.40	9000
21843/A	220	ALUMINIUM	40	50	40	33	3.20	13000
24856/A	250	ALUMINIUM	56	65	48	40	4.70	20000

# XXL blocks 150

150 mm sheave for 20 mm line Safe working load = 6500 kg



Mod. 911.154

**SINGLE BLOCK**  
Weight = 1.80 kg  
Swivel head for  
14 mm HR shackle  
**SWL = 6500 kg**



Mod. 941.154

**BLOCK WITH BECKET**  
Weight = 2.00 kg  
Swivel head for  
14 mm HR shackle  
**SWL = 6500 kg**



Mod. 981.154

**FIDDLE WITH BECKET**  
Weight = 2.80 kg  
Swivel head for  
14 mm HR shackle  
**SWL = 6500 kg**



Mod. 910.155/Z

**WEB BLOCK**  
"Strengthened"  
Weight = 1.90 kg  
For line connection  
**SWL = 8000 kg**



Mod. 940.155/Z

**WEB WITH BECKET**  
"Strengthened"  
Weight = 2.02 kg  
For line connection  
**SWL = 8000 kg**



Mod. 812.154

**BLOCK ON PAD-EYE**  
Weight = 3.10 kg  
6 x Ø10 mm screws  
**SWL = 6500 kg**



Mod. 813.154

**BLOCK ON SCREWED  
PAD-EYE**  
Weight = 4.10 kg  
6xØ10 mm screws  
**SWL = 6500 kg**

Mod. 7216

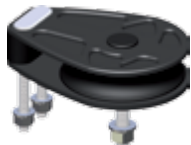


Page 177

Mod. 7316



Page 177



Mod. 831.154

**DECK BLOCK**  
Weight = 1.40 kg  
Screws = 2xØ12 +  
1xØ14 mm  
**SWL = 6500 kg**



Mod. 832.154

**DOUBLE  
DECK BLOCK**  
Weight = 2.30 kg  
Screws = 2 x Ø12 +  
1 x Ø14 mm  
**SWL = 6500 kg**



Mod. 815.150

**HALYARD BLOCK**  
Weight = 3.30 kg  
4 x Ø12 mm screws  
**SWL = 6500 kg**

full scale



# XXL blocks 180

180 mm sheave for 24 mm line Safe working load = 9000 kg



Mod. 911.184

**SINGLE BLOCK**  
Weight = 2.85 kg  
Swivel head for  
16 mm HR shackle  
**SWL = 9000 kg**



Mod. 941.184

**BLOCK WITH BECKET**  
Weight = 3.20 kg  
Swivel head for  
16 mm HR shackle  
**SWL = 9000 kg**



Mod. 910.185



**WEB BLOCK**  
Weight = 2.60 kg  
For line connection  
**SWL = 9000 kg**



Mod. 940.185

**WEB WITH BECKET**  
Weight = 2.70 kg  
For line connection  
**SWL = 9000 kg**



Mod. 812.184

**BLOCK ON PAD-EYE**  
Weight = 5.25 kg  
6 x Ø10 mm screws  
**SWL = 9000 kg**



Mod. 813.184

**BLOCK ON  
SCREWED PAD-EYE**  
Weight = 6.60 kg  
6 x Ø10 mm screws  
**SWL = 9000 kg**

Mod. 7220

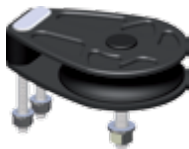


Page 177

Mod. 7320



Page 177



Mod. 831.184

**DECK BLOCK**  
Weight = 2.30 kg  
Screws = 2xØ14 +  
1xØ16 mm  
**SWL = 9000 kg**



Mod. 832.184

**DOUBLE  
DECK BLOCK**  
Weight = 3.65 kg  
Screws = 2 x Ø14 +  
1 x Ø16 mm  
**SWL = 9000 kg**

full scale





# XXL blocks 220 / 250

220 mm sheave for 30 mm line Safe working load = 13000 kg



Mod. 911.224

**SINGLE BLOCK**  
Weight = 9.60 kg  
Swivel head for  
20 mm HR shackle  
**SWL = 13000 kg**



Mod. 941.224

**BLOCK WITH BECKET**  
Weight = 10.20 kg  
Swivel head for  
20 mm HR shackle  
**SWL = 13000 kg**

full scale  
220 mm



Mod. 910.225

**WEB BLOCK**  
Weight = 7.65 kg  
For line connection  
**SWL = 13000 kg**



Mod. 940.225

**WEB WITH BECKET**  
Weight = 8.25 kg  
For line connection  
**SWL = 13000 kg**

250 mm sheave for 40 mm line Safe working load = 20000 kg



Mod. 911.254

**SINGLE BLOCK**  
Weight = 14.35 kg  
Swivel head for  
24 mm HR shackle  
**SWL = 20000 kg**



Mod. 941.254

**BLOCK WITH BECKET**  
Weight = 15.05 kg  
Swivel head for  
24 mm HR shackle  
**SWL = 20000 kg**



Mod. 910.255

**WEB BLOCK**  
Weight = 10.35 kg  
For line connection  
**SWL = 20000 kg**



Mod. 940.255

**WEB WITH BECKET**  
Weight = 11.05 kg  
For line connection  
**SWL = 20000 kg**