

# A316 s.steel series

## CLASSIC LINE

This stainless steel series, with a traditional design, is conceived especially for classic boats.

The line includes 6 different sizes with diameters from 65 to 180 mm and Safe Working Load up to 9000 kg.

Perfectly polished AISI 316 stainless steel cheekplates and accessories, fully rounded corners for greater manageability, nuts and bolts replaced by pins and recessed screws to eliminate any protruding parts.

Each size is available in numerous versions as described in the following pages.



## CAM CLEAT

All models can be supplied with cam cleat. Just add **/C** to the model code when ordering.



## SHEAVES

Resin or aluminium sheaves in larger models are easy to dismantle and work on a main composite fibre bearing and two side ball bearings (self-captive).



Sphinx 12m SI - Robbe & Berking - Germany

# s.steel block 65

65 mm sheave for 12 mm line

Safe working load = 800 kg



Mod. S0601

**SINGLE BLOCK**  
Weight = 0.29 kg  
Swivel head for  
6 mm shackle\*  
**SWL = 800 kg**



Mod. S0602

**SINGLE WITH BECKET**  
Weight = 0.32 kg  
Swivel head for  
6 mm shackle\*  
**SWL = 800 kg**

real size



\* shackle not included

All models are available with cam-cleat, add /C to the model code.



Mod. S0620

**CAM-CLEAT**  
Weight = + 0.18 kg  
Max load = 160 kg



Mod. S0603

**DOUBLE BLOCK**  
Weight = 0.51 kg  
Fixed head for  
8 mm shackle\*  
**SWL = 1200 kg**



Mod. S0604

**DOUBLE WITH BECKET**  
Weight = 0.54 kg  
Fixed head for  
8 mm shackle\*  
**SWL = 1200 kg**



Mod. S0605

**TRIPLE BLOCK**  
Weight = 0.70 kg  
Fixed head for  
8 mm shackle\*  
**SWL = 1200 kg**



Mod. S0606

**TRIPLE WITH BECKET**  
Weight = 0.73 kg  
Fixed head for  
8 mm shackle\*  
**SWL = 1200 kg**



Mod. S0609

**WEBBING BLOCK**  
Weight = 0.25 kg  
For line connection  
**SWL = 800 kg**



Mod. S0616

**STAND-UP BLOCK**  
Weight = 0.37 kg  
1 x Ø12 mm screw  
**SWL = 800 kg**



Mod. S0611

**DECK BLOCK**  
Weight = 0.30 kg  
2 x Ø8 mm screws  
**SWL = 800 kg**



Mod. S0612

**DOUBLE DECK BLOCK**  
Weight = 0.46 kg  
2 x Ø8 mm screws  
**SWL = 800 kg**



Mod. S0613

**BLOCK ON U-BOLT**  
Weight = 0.36 kg  
2 x Ø6 mm screws  
**SWL = 800 kg**



Mod. S0614

**BLOCK ON PAD-EYE**  
Weight = 0.38 kg  
2 x Ø6 mm screws  
**SWL = 800 kg**



Mod. S0615

**BLOCK ON SCREWED PAD-EYE**  
Weight = 0.45 kg  
2 x Ø6 mm screws  
**SWL = 800 kg**



Mod. 7106

Page 176



Mod. 7206

Page 177



Mod. 7306

Page 177 - 75 -

# s.steel block 75

75 mm sheave for 14 mm line

Safe working load = 1500 kg



Mod. S0701

**SINGLE BLOCK**  
Weight = 0.39 kg  
Swivel head for  
8 mm shackle\*  
**SWL = 1500 kg**



Mod. S0702

**SINGLE WITH BECKET**  
Weight = 0.46 kg  
Swivel head for  
8 mm shackle\*  
**SWL = 1500 kg**



Mod. S0703

**DOUBLE BLOCK**  
Weight = 0.68 kg  
Fixed head for  
10 mm shackle\*  
**SWL = 2300 kg**



Mod. S0704

**DOUBLE WITH BECKET**  
Weight = 0.75 kg  
Fixed head for  
10 mm shackle\*  
**SWL = 2300 kg**



Mod. S0705

**TRIPLE BLOCK**  
Weight = 0.91 kg  
Fixed head for  
10 mm shackle\*  
**SWL = 2300 kg**



Mod. S0706

**TRIPLE WITH BECKET**  
Weight = 0.98 kg  
Fixed head for  
10 mm shackle\*  
**SWL = 2300 kg**



Mod. S0711

**DECK BLOCK**  
Weight = 0.35 kg  
Screws = 2 x Ø6 +  
1 x Ø8 mm  
**SWL = 1500 kg**



Mod. S0712

**DOUBLE DECK BLOCK**  
Weight = 0.62 kg  
Screws = 2 x Ø6 +  
1 x Ø8 mm  
**SWL = 1500 kg**



Mod. S0731

**CLASSIC DECK BLOCK**  
Weight = 0.86 kg  
4 x Ø8 mm screws  
**SWL = 1500 kg**



Mod. S0732

**CLASSIC DOUBLE DECK BLOCK**  
Weight = 1.32 kg  
4 x Ø8 mm screws  
**SWL = 1500 kg**



Mod. S0713

**BLOCK ON U-BOLT**  
Weight = 0.55 kg  
2 x Ø8 mm screws  
**SWL = 1500 kg**



Mod. S0714

**BLOCK ON PAD-EYE**  
Weight = 0.65 kg  
4 x Ø6 mm screws  
**SWL = 1500 kg**



Mod. 7108

Page 176



Mod. 7208

Page 177



real size

\* shackle not included

Deck blocks are available with runner's eyebolt, add /V to the model code.



All models are available with cam-cleat, add /C to the model code.

Mod. S0720

**CAM-CLEAT**  
Weight = + 0.36 kg  
Max load = 160 kg



Mod. S0715

**BLOCK ON SCREWED PAD-EYE**  
Weight = 0.95 kg  
4 x Ø6 mm screws  
**SWL = 1500 kg**



Mod. 7308

Page 177

# s.steel block 90

90 mm sheave for 16 mm line Safe working load = 2500 kg



Mod. S0901

**SINGLE BLOCK**  
Weight = 0.73 kg  
Swivel head for  
10 mm shackle\*  
**SWL = 2500 kg**



Mod. S0902

**SINGLE WITH BECKET**  
Weight = 0.85 kg  
Swivel head for  
10 mm shackle\*  
**SWL = 2500 kg**

real size



Mod. S0903

**DOUBLE BLOCK**  
Weight = 1.13 kg  
Fixed head for  
12 mm shackle\*  
**SWL = 3300 kg**



Mod. S0904

**DOUBLE WITH BECKET**  
Weight = 1.25 kg  
Fixed head for  
12 mm shackle\*  
**SWL = 3300 kg**



Mod. S0905

**TRIPLE BLOCK**  
Weight = 1.70 kg  
Fixed head for  
12 mm shackle\*  
**SWL = 3300 kg**



Mod. S0906

**TRIPLE WITH BECKET**  
Weight = 1.83 kg  
Fixed head for  
12 mm shackle\*  
**SWL = 3300 kg**



Mod. S0911



**DECK BLOCK**  
Weight = 0.70 kg  
Screws = 2 x Ø8 +  
1 x Ø10 mm  
**SWL = 2500 kg**



Mod. S0912

**DOUBLE DECK BLOCK**  
Weight = 1.18 kg  
Screws = 2 x Ø8 +  
1 x Ø10 mm  
**SWL = 2500 kg**

Mod. S0931



**CLASSIC DECK BLOCK**  
Weight = 1.40 kg  
4 x Ø8 mm screws  
**SWL = 2500 kg**



Mod. S0932

**CLASSIC DOUBLE DECK BLOCK**  
Weight = 2.18 kg  
4 x Ø8 mm screws  
**SWL = 2500 kg**

Mod. S0914



**BLOCK ON PAD-EYE**  
Weight = 1.05 kg  
4 x Ø8 mm screws  
**SWL = 2500 kg**



Mod. 7210

Page 177



Mod. S0915

**BLOCK ON SCREWED PAD-EYE**  
Weight = 1.33 kg  
4 x Ø8 mm screws  
**SWL = 2500 kg**



Mod. 7310

Page 177

\* shackle not included



Deck blocks are available with runner's eyebolt, add /V to the model code.

# s.steel block 120

120 mm sheave for 18 mm line Safe working load = 4500 kg



Mod. S1201

**SINGLE BLOCK**  
Weight = 1.28 kg  
Swivel head for  
12 mm HR shackle\*  
**SWL = 4500 kg**



Mod. S1202

**SINGLE WITH BECKET**  
Weight = 1.46 kg  
Swivel head for  
12 mm HR shackle\*  
**SWL = 4500 kg**

real size



Mod. S1203

**DOUBLE BLOCK**  
Weight = 1.95 kg  
Fixed head for  
14 mm HR shackle\*  
**SWL = 6000 kg**



Mod. S1204

**DOUBLE WITH BECKET**  
Weight = 2.13 kg  
Fixed head for  
14 mm HR shackle\*  
**SWL = 6000 kg**



Mod. S1211

**DECK BLOCK**  
Weight = 1.13 kg  
Screws = 2 x Ø10 +  
1 x Ø12 mm  
**SWL = 4500 kg**



Mod. S1212

**DOUBLE DECK BLOCK**  
Weight = 1.74 kg  
Screws = 2 x Ø10 +  
1 x Ø12 mm  
**SWL = 4500 kg**

Deck blocks are available with runner's eyebolt, add *IV* to the model code.



Mod. S1231

**CLASSIC DECK BLOCK**  
Weight = 2.15 kg  
4 x Ø10 mm screws  
**SWL = 4500 kg**



Mod. S1232

**CLASSIC DOUBLE DECK BLOCK**  
Weight = 3.70 kg  
4 x Ø10 mm screws  
**SWL = 4500 kg**



Mod. S1214

**BLOCK ON PAD-EYE**  
Weight = 2.28 kg  
4 x Ø10 mm screws  
**SWL = 4500 kg**



Mod. S1215

**BLOCK ON SCREWED PAD-EYE**  
Weight = 2.58 kg  
4 x Ø10 mm screws  
**SWL = 4500 kg**



Mod. 7214

Page 177



Mod. 7314

Page 177

\* shackle not included



# s.steel block 150

150 mm sheave for 20 mm line Safe working load = 6500 kg

real size



Mod. S1501

**SINGLE BLOCK**  
Weight = 2.74 kg  
Swivel head for  
14 mm HR shackle\*  
**SWL = 6500 kg**



Mod. S1502

**SINGLE WITH BECKET**  
Weight = 3.04 kg  
Swivel head for  
14 mm HR shackle\*  
**SWL = 6500 kg**



Mod. S1511

**DECK BLOCK**  
Weight = 2.13 kg  
Screws = 2 x Ø12 +  
1 x Ø14 mm  
**SWL = 6500 kg**



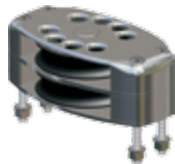
Mod. S1512

**DOUBLE DECK BLOCK**  
Weight = 3.50 kg  
Screws = 2 x Ø12 +  
1 x Ø14 mm  
**SWL = 6500 kg**



Mod. S1531

**CLASSIC DECK BLOCK**  
Weight = 4.57 kg  
4 x Ø12 mm screws  
**SWL = 6500 kg**



Mod. S1532

**CLASSIC DOUBLE DECK BLOCK**  
Weight = 7.91 kg  
4 x Ø12 mm screws  
**SWL = 6500 kg**



Deck blocks are available with runner's eyebolt, add **IV** to the model code.



Mod. S1514

**BLOCK ON PAD-EYE**  
Weight = 4.71 kg  
6 x Ø10 mm screws  
**SWL = 6500 kg**



Mod. 7216

Page 177



Mod. S1515

**BLOCK ON SCREWED PAD-EYE**  
Weight = 6.24 kg  
6 x Ø10 mm screws  
**SWL = 6500 kg**



Mod. 7316

Page 177

\* shackle not included

# s.steel block 180

180 mm sheave for 24 mm line Safe working load = 9000 kg



Mod. S1801

**SINGLE BLOCK**  
Weight = 4.11 kg  
Swivel head for  
16 mm HR shackle\*  
**SWL = 9000 kg**



Mod. S1802

**SINGLE WITH BECKET**  
Weight = 4.61 kg  
Swivel head for  
16 mm HR shackle\*  
**SWL = 9000 kg**

real size



Mod. S1811

**DECK BLOCK**  
Weight = 3.31 kg  
Screws = 2 x Ø14 +  
1 x Ø16 mm  
**SWL = 9000 kg**



Mod. S1812

**DOUBLE DECK BLOCK**  
Weight = 5.26 kg  
Screws = 2 x Ø14 +  
1 x Ø16 mm  
**SWL = 9000 kg**

Mod. S1831

**CLASSIC DECK BLOCK**  
Weight = 6.86 kg  
4 x Ø14 mm screws  
**SWL = 9000 kg**



Mod. S1832

**CLASSIC DOUBLE DECK BLOCK**  
Weight = 11.8 kg  
4 x Ø14 mm screws  
**SWL = 9000 kg**



Deck blocks are available with runner's eyebolt, add /V to the model code.



Mod. S1814

**BLOCK ON PAD-EYE**  
Weight = 7.57 kg  
6 x Ø10 mm screws  
**SWL = 9000 kg**



Mod. 7220

Page 177



Mod. S1815

**BLOCK ON SCREWED PAD-EYE**  
Weight = 9.51 kg  
6 x Ø10 mm screws  
**SWL = 9000 kg**



Mod. 7320

Page 177

\* shackle not included